



Joint Research Centre, Ispra (Italy)

ERNCIP context

The ERNCIP Office operates within the organisational framework of the Institute for the Protection and Security of the Citizen (IPSC) of the European Commission's Joint Research Centre.

The Institute provides scientific and technological support to European Union policies in different areas, including global stability and security, crisis management, maritime and fisheries policies and the protection of critical infrastructures.

IPSC works in close collaboration with research centres, universities, private companies and international organisations in a concerted effort to develop research-based solutions for the security and protection of citizens.

The ERNCIP Office has been mandated by Directorate General Home Affairs (DG HOME) of the European Commission.



The EMSL Lab at JRC, Ispra (Italy)

How can I get involved

ERNCIP welcomes any stakeholder group who is involved in Critical Infrastructure Protection: government offices and agencies, CI operators, technology providers and particularly facilities and laboratories.

If your organization is interested in joining our Network, please consult our website:



<http://ipsc.jrc.ec.europa.eu/index.php/ERNCIP/688/0/>

Naouma KOURTI
European Commission, Joint Research Centre
Institute for the Protection and Security of the Citizen
Security Technology Assessment Unit
Via E. Fermi 2749, I-21027 Ispra (VA), Italy
e-mail: erncip-office@jrc.ec.europa.eu
Tel +39 0332 786045
Fax +39 0332 786565

Contact



EUROPE 2020

**European Reference Network
for Critical Infrastructure
Protection**

the project

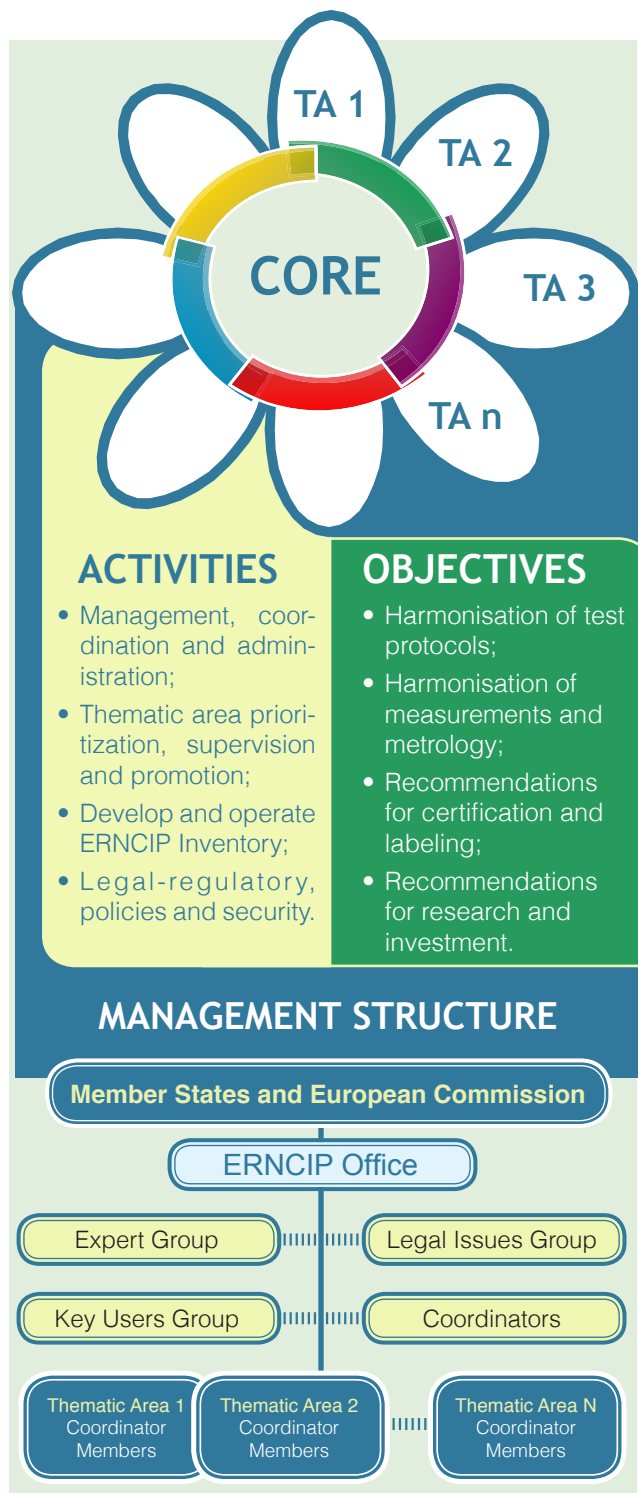
established under the umbrella
of the European Programme for
Critical Infrastructure Protection.

Our mission is to foster the emergence of innovative, qualified, efficient and competitive security solutions, through the networking of European experimental capabilities.

ERNCIP provides a framework for CIP-related experimental facilities and laboratories to share knowledge and expertise, and to harmonise test protocols throughout Europe, aiming at improved protection of critical infrastructure in the EU against all types of threats and hazards.

Copyright © European Union, 2012 - JRC70090

JRC



Discover the ERNCIP Network

ERNCIP Inventory

The ERNCIP Inventory holds profiles of CIP-related experimental and testing facilities across the EU.

The system helps all types of critical infrastructure stakeholders (government authorities, infrastructure operators, facilities, laboratories etc.) to identify and make contact with CIP-related experimental expertise located in the EU, when they need:

- Specific knowledge or expertise on CIP security-related problems to consult, cooperate, or hire;
- Certified solutions to CIP security-related problems;
- Research partners to conduct CIP-related experiments, or to form partnerships to bid for EU funded projects.

How to access?

In order to be a Member and publish your profile, or simply to use the search functions, please go to: <https://erncip.jrc.ec.europa.eu>.

**PROMOTE
YOUR
FACILITY**

**Add your profile
to the inventory !**

ERNCIP Thematic Areas

The ERNCIP work programme addresses several thematic areas (TA), as identified by the sponsors. The work is undertaken by specific thematic working groups, each led by a TA coordinator.

Current TAs and coordinators:

Aviation Security Detection Equipment	JRC, Geel
Explosives Detection Equipment (non-Aviation)	CEA (FR)
Industry Control Systems and Smart grids	CPNI (NL)
Structural Resistance against Seismic Risks	JRC, Ispra
Resistance of Structures against Explosion effects	Fraunhofer EMI (DE)
Chemical & Biological Risks in the Water Sector	Austrian Environmental Agency
Video Analytics and Surveillance	CAST (UK)
Applied Biometrics for CIP	CAST (UK)
Radiological Threats to Critical Infrastructure	STUK (Finland)

Highlighted objectives of TAs

- Harmonisation of test protocols, promotion of standardisations on test methods;
- Proposing methodologies for measurement, quality assurance, calibration and metrology;
- Recommendations on EU-wide evaluation / certification / labeling procedures;
- Recommendations for research and investment.